

Jacqui Borland, CEO

Sonja Best
Executive Assistant to CEO

Jay Ou
Chief Financial Officer (CFO)
Financial Planning and Management, Financial Reporting and Compliance

Rachel Kerlake
National Director, Individual & Community Services
Aspect Therapy, Aspect Assessments, Aspect Adult Community Services, Positive Behaviour Support & Safeguarding

Maryanne Gosling
National Director, Aspect Education
Aspect Schools Property, PMO

Olivia Shah
National Director, Partnerships, Development and Autism Friendly
Fundraising, Autism Friendly, Business Development and Strategic Partnerships

Karen Doak
Chief People Officer (CPO)
People, Culture & Safety

Robyn Eicker
Chief Marketing Officer (CMO)
Marketing and Communications, Customer Engagement, Research (ARCAP), Aspect Workshops

Brian Kelly
Chief Information Officer (CIO)
Business Solutions, IT

Executive team
as at Nov 2024



Jacqui Borland, CEO

Sonja Best
Executive Assistant to CEO

Jay Ou
Chief Financial Officer
(CFO)

Pankaj Karia
Financial Controller

Rachel Kerslake
National Director,
Individual & Community
Services

Fiona Aldridge
Manager
Aspect Assessments

Jessica Degrassi
Manager
ICS PBS & Safeguarding

Maryanne Pease
Regional Manager
Aspect Therapy

Andrew Trenfield
Regional Manager
Aspect Therapy

Ben James
Manager
Aspect Adult Community
Services

Louise Evans
ICS Business Manager

Maryanne Gosling
National Director,
Aspect Education

Karilyn Gumley
Deputy National Director,
Aspect Education

Laura Guille
National Operations
Manager Aspect Schools

Brid Corrigan
National Manager
Education Leadership
and Learning

Ben Dawe
Head of Partnerships and
Business Development

PRINCIPALS

Anna Brady
Aspect Vern Barnett
School

Amanda Yates (Acting)
Aspect Riverina School

Craig McNee
Aspect Hunter School

Geoffrey Fouracre
Aspect Macarthur School

Shane Morris
Aspect Hills Shire School

Rowena Perritt
Aspect South Coast School

Kaye Perry
Aspect Treetop School

Mark Rudd
Aspect Central Coast School

Joanne Tisdell
Aspect South East Sydney
School

Michelle Zikmundovsky
Aspect Western Sydney
School

Olivia Shah
National Director,
Partnerships, Development
& Autism Friendly

Lucie Lochrin
Head of Fundraising

Shahar Burla
Head of Philanthropy
and relationships

Nadine Eulgem
Relationship and
Philanthropy Manager

Dr Tom Tutton
Executive Manager,
Aspect practice

Ainslie Robinson
Working in Partnership
Officer

Rachel Mills
Head of Commercial
Products

Karen Doak
Chief People Officer
(CPO)

David Dunne
Senior Manager,
Workforce Services
and Systems

Sharen Cameron
Manager, Safety and
Wellbeing

Greg McKay
Manager, Workplace
Relations

Robyn Eicker
Chief Marketing Officer
(CMO)

Melanie Carrier
Customer Engagement
Manager

Dr Vicki Gibbs
Head of Research,
ARCAP

Chris Champion
Program Director
Positive Partnerships

Michelle Feros
Company Secretary

Chirag Patel
Business Transformation
Lead

Brian Kelly
Chief Information Officer
(CIO)

James Irving
National Manager
IT

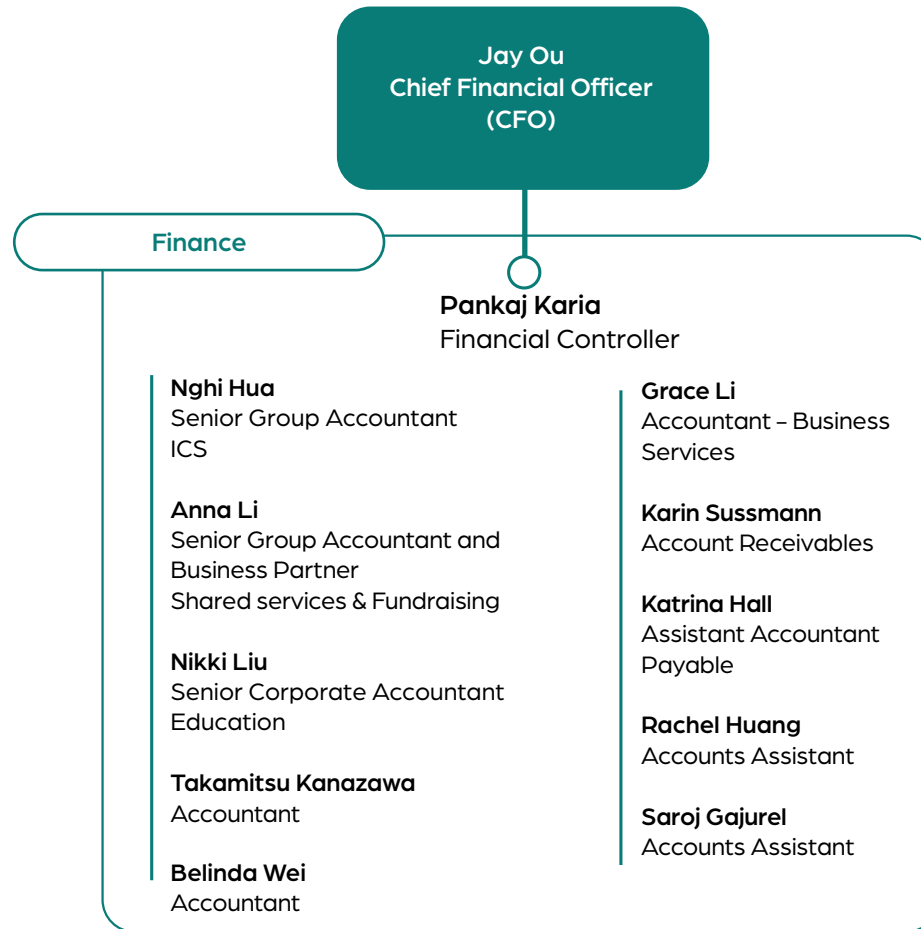
Robyn Silber
Business Solutions
Manager

Karen Dhu
Enterprise Risk
manager

Leadership
Network

as at Nov 2024





Key Staff
as at Nov 2024

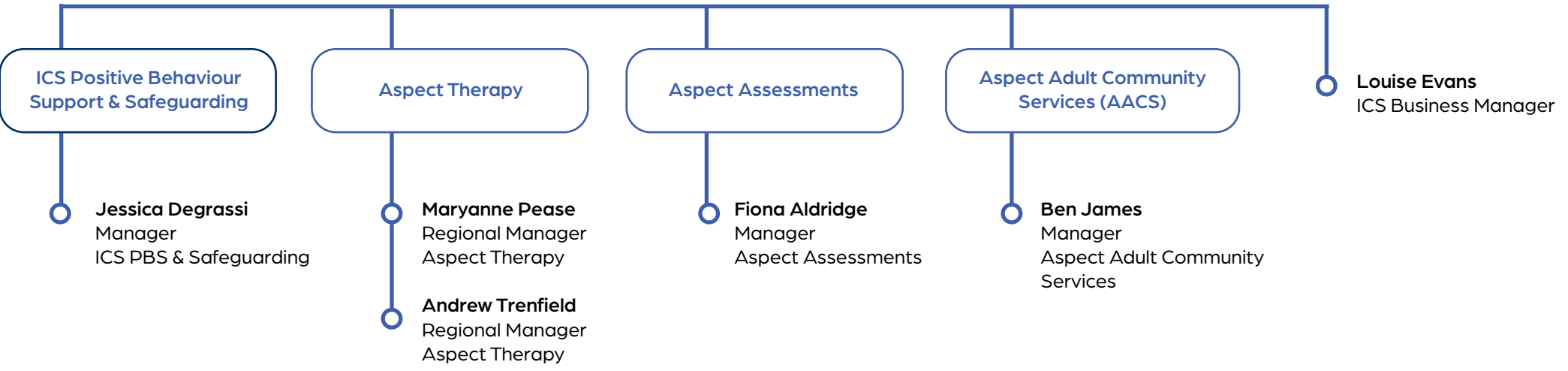


Rachel Kerslake
National Director,
Aspect Individual &
Community Services (ICS)

Maggie Anderson
ICS Executive Assistant

Pat Dudley
Administration Officer

Kerry Ritzrow
Logistics Coordinator



Key Staff
as at Nov 2024



Maryanne Gosling
National Director,
Aspect Education

Ben Counihan
Administration Support – Education

Teaching and Learning

Karilyn Gumley
Deputy National Director

Brid Corrigan
National Manager
Education
Leadership and
Learning

Kate McLaren
Safeguarding and
Wellbeing Officer

Katie Fleet
Program Evaluation
Manager

Meghan Williams
ACA Education
Manager

Laura Guille
National Operations
Manager

Ben Dawe
Head of Education
Partnerships and
Business Development

Operations

Alyx Quinton
Systems Administrator

Casey Mannix
Project Administrator

Fiona Roknic
Lease
Administrator

School Principals

Anna Brady
Aspect Vern Barnett School

Michelle Zikmundovsky
Aspect Western Sydney School

Joanne Tisdell
Aspect South East Sydney
School

Shane Morris
Aspect Hills Shire School

Rowena Perritt
Aspect South Coast School

Mark Rudd
Aspect Central Coast School

Craig McNee
Aspect Hunter School

Geoffrey Fouracre
Aspect Macarthur School

Amanda Yates (acting)
Aspect Riverina School

Kaye Perry
Aspect Treetop School

Property

Colin Murray
Project Management

Nic Escaille
James Cole
Project managers

Scott Brown
Property Acquisitions
Manager

Mark Sefton
Asset Manager

Paul Allum
Facilities Manager

Key Staff
as at Nov 2024

Olivia Shah
National Director
Fundraising, Autism Friendly,
Business Development and
Strategic Partnerships

Nadia Blears
Executive Assistant

**Fundraising, Supporter
and Data Services**

Lucie Lochrin
Head of Fundraising

Leanne Riches
Individual Giving Manager

Fran Hay
Direct Marketing Lead

Agnes Toth
Fundraising Coordinator

Bess Higgins
Supporter Care Officer

Vacant
Corporate Fundraising
Manager

Janice Clarkson
Community Fundraising Lead

Monika Milne
Campaign Lead

Keri Woods
Campaign Coordinator

Prajwal Dhewajoo
Senior Database Administrator

Katrina Chemello
Database Coordinator

Everett Leeson
Fundraising Assistant

**Philanthropy, Relationships
and Gift in Will**

Shahar Burla
Head of Philanthropy
& Relationships

Nadine Eulgem
Relationships and Philanthropy
Manager

Anastazja Kramarz
Philanthropy Executive

Vacant
Philanthropy Executive

Anna Phillips
Gifts in Wills and Philanthropy
Coordinator

Berna Lasoski
Philanthropy Events
Coordinator

Julianne Artup
Senior Philanthropy Executive

Josan Abels
Corporate Giving Manager

**Autism Friendly and Working in
Partnership with Autistic people**

Dr Tom Tutton
Executive Manager,
Aspect Practice

Ainslie Robinson
Working in Partnership
Senior Officer

Emma Beardsley
Sr Autistic Consultant

Matthew Oastler
Autism Friendly Team Leader

Garry Ryan
Autism Friendly Consultant

Rebecca Street
Autism Friendly Consultant

Tess Healy
Project Officer

Rebecca McCash
Autism Friendly Consultant

Bo Johnson
Autistic Consultant

Jessica Novak
Autistic Consultant

Chloe McDonald
Administration Officer AF

**Strategic Partnerships and
Business Development**

Rachel Mills
Head of Commercial Products

Kate Madden
Relationship & Project
Co-ordinator



Key Staff
as at Nov 2024

Karen Doak
Chief People Officer
(CPO)

**Workforce Services
& Systems**

David Dunne
Senior Manager, Workforce
Services and systems

Rachael Fox
People Services
Team Leader

Kendra Balogh
Talent Acquisition
Consultant -
Education

Elaine Baxter
People Services
Consultant

**Adrianna
Tomaszewska**
People Services
Associate

Lauren Roebuck
Talent Sourcing
Specialist

Naomi McGowan
Recruitment
Consultant

Josh Rochford
Payroll & Workforce
Systems Team Leader

Yarra Punturiero
Senior Payroll Officer

Suzy Luckie
Payroll Officer

Rosie Pollard
Payroll &
People Services
Administrator

**Talent
& Organisational
Development**

Hannah McBride
Learning & Capability
Consultant

Renee Christie
Senior Inclusion
Officer (maternity leave)

Erin James
Diversity & Inclusion
Coordinator

Safety & Wellbeing

Sharen Cameron
Manager,
Safety & Wellbeing

Oliver Grether
Recovery at Work
Coordinator

**Workplace
Relations**

Greg McKay
Manager, Workplace
Relations

Robyn Eicker
Chief Marketing Officer
(CMO)

Marketing & Communications

Hayley Robbins
Senior Marketing and
Communications Business Partner,
Education

Michael Theo
Autism Consultant

Sean Pickering
Marketing Coordinator

Julie Fenwick
Senior Marketing and
Communications Business Partner,
ICS

Imogen Johnson
Marketing and Communications
Business Partner, Autism Friendly,
Partnerships, Fundraising

Benedicte Marie
Social Media and Design
Manager

Raina Movigliatti
Senior Graphic Designer

Dominic Ellis
Graphic Design and Social
media Executive

Joshua Dodd
Digital Asset Manager

Jane Rogers
Internal Communications Specialist

Customer Engagement

Melanie Carrier
Customer Engagement
Manager

Susan Hyslop
Team Leader
Customer Engagement

Sally Nicholson
Customer Engagement
Representative

Research

Dr Vicki Gibbs
Head of Research,
ARCAP

Dr Abigail Love
Research Fellow

Dr Ru Ying Cai
Research Fellow

Dr Chris Edwards
Research Fellow

Rachel Rizk
Communications Advisor

Key Staff
as at Nov 2024

Brian Kelly
Chief Information Officer
(CIO)

IT

James Irving
National Manager, IT

Peter Kirwan
Senior Systems Administrator

Tao Song
Senior Systems Engineer

Aun Burki
Senior Network & Security
Engineer

Rees Gee
Network & Security
Administrator

Chris Roebuck
IT Helpdesk Team Leader

Abdullah Zamir
IT Helpdesk Officer

Payam Ebadi
IT Helpdesk Officer

Sukhmeet Singhota
IT Helpdesk Officer

Kritika Shrestha
IT Helpdesk Officer

Business Solutions

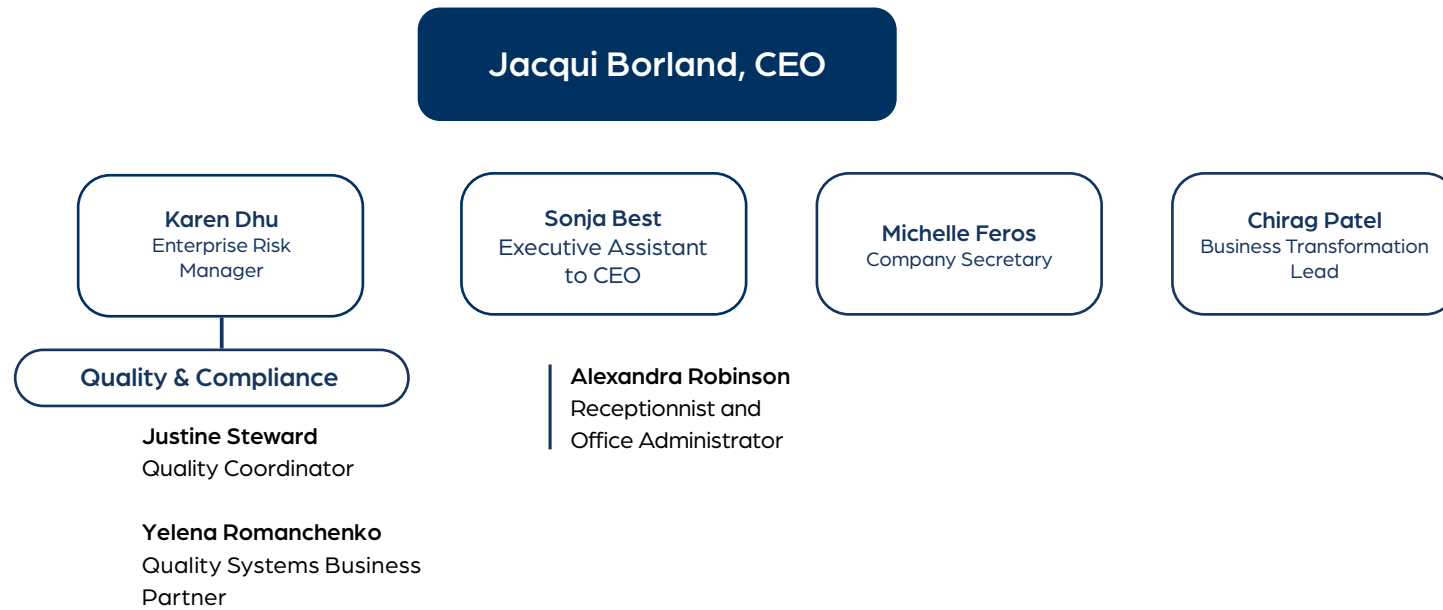
Robyn Silber
Business Solutions Manager

Darrell Greer
Salesforce Business Analyst

Michael Behar
Functional Consultant

Key Staff
as at Nov 2024

Non-executive direct reports to Jacqui Borland, CEO (1/2)



Non-executive direct reports to Jacqui Borland, CEO (2/2)

